

# Welding Machine M-TIG 270P



**MISARC**

**MISARC Industries**

Plot No. 10, exit No. B6/2, BEMCIEL, Belgaum 590008 Karnataka, India. [www.mis-arc.com](http://www.mis-arc.com) / [info@mis-arc.com](mailto:info@mis-arc.com)



## Features and Benefits

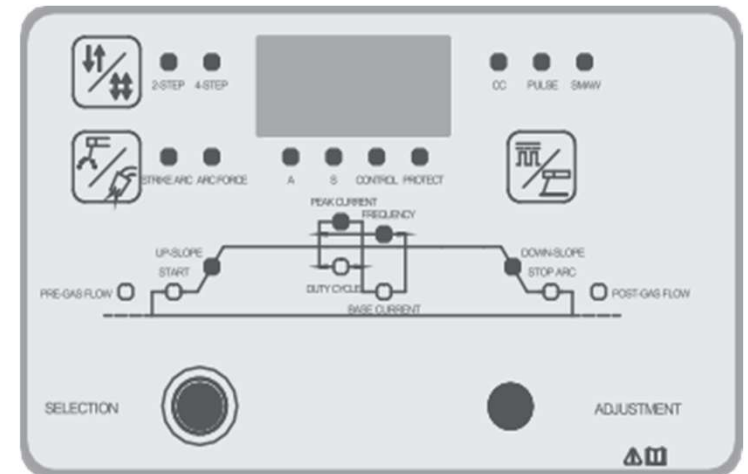
**M TIG270P** welding machine is a portable type welding machine. According to the situation summary of site application and site repair, it is designed to equip TIG, MMA and CEL welding process, which can be used to weld CS, SS, Ti alloy and other materials. With no doubt, it is the best product for pipeline construction, site installation, emergency repair, and small hardware industry.

**Digital system:** MCU digital control system, precisely control the welding process, abundant TIG welding parameter control.

**Full pipeline process:** Root welding through CEL or TIG welding process, fill and cap welding through MMA or TIG welding process.

**Multiple Remote control options:** TIG torch, remote controller, foot pedal.

Designed for outdoor: 18kg portable design, work with generator.



**MISARC**

WHERE INNOVATION  
MEETS QUALITY

## Technical Specification

<i>Rated input voltage /frequency (V/Hz)</i>	<i>3 phase, AC380V±10%, 50 /60Hz</i>
<i>Rated input capacity (KVA)</i>	<i>10</i>
<i>Rated input current (A)</i>	<i>16.5</i>
<i>Duty cycle (40°C)</i>	<i>35%@275A 100%@200A</i>
<i>OCV (V)(MMA /TIG)</i>	<i>MMA(23V) /TIG(77V)</i>
<i>Output current (A)</i>	<i>5-275</i>
<i>MMA Arc force (A)</i>	<i>10-200</i>
<i>Hot start (A)</i>	<i>20-160</i>
<i>Output current (A)</i>	<i>5-275</i>
<i>Pre-gas /post gas (s)</i>	<i>0.1-9.99/0.1-60</i>
<i>Initial /final current (A)</i>	<i>5-275 /5-275</i>
<i>Up-slope /down-slope (s)</i>	<i>0.1-10 /0.1-20</i>
<i>Tig Peak current (A)</i>	<i>5-275</i>
<i>Base current (A)</i>	<i>5-275</i>
<i>Pulse frequency (Hz)</i>	<i>0.2-30 /30-500</i>
<i>Pulse duty cycle</i>	<i>10%-90%</i>
<i>Trigger mode</i>	<i>2T, 4T, Spot welding, Repeat</i>
<i>Arc ignition method</i>	<i>HF</i>
<i>Protection class</i>	<i>IP23S</i>
<i>Insulation class</i>	<i>H</i>
<i>Dimension (mm)</i>	<i>460*210*410</i>
<i>Weight (kg /lb)</i>	<i>19 /42</i>

## Machine Includes

- One Power source
- One Connected primary cable, length three meters
- One Welding cable, length three meters
- One Ground cable, length three meters
- One TIG torch



WHERE INNOVATION  
MEETS QUALITY